



**ALASKA DIVISION OF HOMELAND  
SECURITY & EMERGENCY  
MANAGEMENT**



**Daily Situation Report  
26-113 • April 23, 2026**

Toll-Free 1.800.478.2337

Anchorage Area 907.428.7000

SEOC 907.428.7100

<p><u>SEOC Preparedness Level</u> Level 1-Routine Operations</p>	<p><a href="http://ready.alaska.gov">http://ready.alaska.gov</a></p>	<p><u>Alaska Military Installation Force</u> <u>Protection Level:</u> FPCON Bravo</p>
<p><u>NTAS Bulletin</u> There are no current advisories  <a href="https://www.dhs.gov/national-terrorism-advisory-system">https://www.dhs.gov/national-terrorism-advisory-system</a></p>	<p><u>Maritime Security (MARSEC)</u> Level:1 Minimum Appropriate Security Measures</p>	

**(Significant changes from previous situation reports are red.)**

**Significant Issues:**

SEOC and the National Weather Service held the 2026 River Watch kickoff meeting to review deployment timelines and current ice conditions in support of response planning. Weekly community calls continue, and Mass Care has coordinated with core response partners to maintain ongoing operational awareness.

**Division of Homeland Security and Emergency Management Public Information:**

Halong Survivors in Anchorage Transition to Temporary Housing \*see attachment

For current press releases, see:

<https://ready.alaska.gov/PublicInformation/PressReleases>

**Department of Health (DOH):**

For current information, see: <https://health.alaska.gov/en/>

**Travel Alerts and Conditions:**

Nenana River Bridge at Moody (MP 243). Maintenance Work. 4/14/2026

For current driving conditions, dial 511 or visit: <https://511.alaska.gov/>

**Barry Arm Landslide / Tsunami Risk:**

For the latest information on the Barry Arm Landslide and Tsunami risk, click here:

<https://dqqs.alaska.gov/hazards/barry-arm-landslide.html>

**Earthquakes:**

United States Geological Service (USGS) Earthquake Information: [Earthquake Hazards Program | U.S. Geological Survey](#) - National Tsunami Warning Center: <https://tsunami.gov/>

**Alaska Volcanoes:**

Great Sitkin: Alert Level: Watch and Aviation Color Code: Orange  
Shishaldin: Alert Level: Advisory and Aviation Color Code: Yellow  
For Alaska Volcano updates, go to: <https://www.avo.alaska.edu/>

**Air Quality Index (AQI) Advisories:**

For the most up-to-date Air Quality Index Advisories:  
<https://dec.alaska.gov/Applications/Air/airtoolsweb/Advisories>

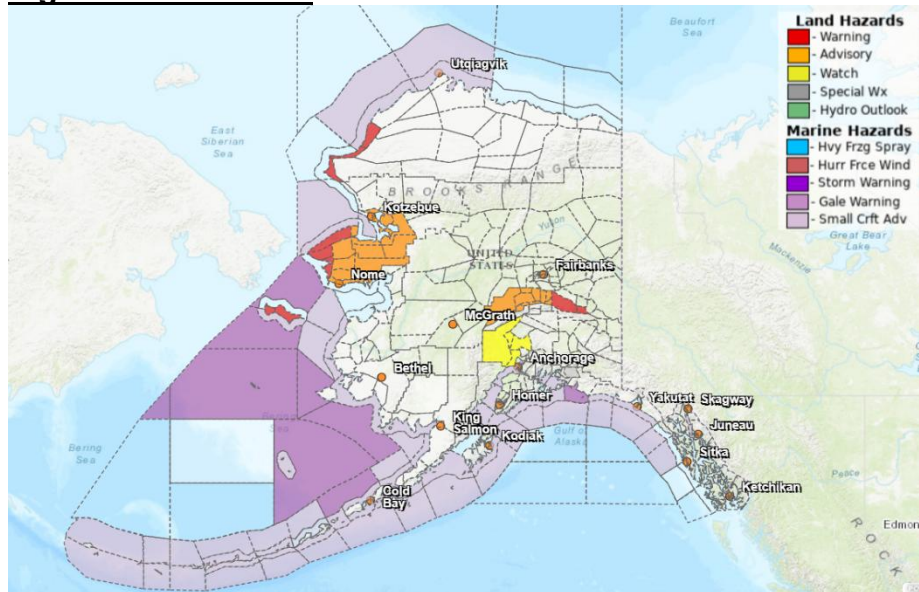
**Spills of Oil and Hazardous Substances:**

The Alaska Division of Environmental Conservation (ADEC) Spill Prevention and Response page is located at: <https://dec.alaska.gov/spar/ppr/spill-information/response/>

**Alaska Cyber Security Information:**

State Employees may sign up for cybersecurity notifications and alerts at:  
<https://oit-int.alaska.gov/security/>

**Significant Weather:**



**WARNINGS:**

Yukon Delta Coast; Lower Yukon River: Blizzard Warning from 10 PM this evening to 4 PM AKDT Thursday.

Shishmaref; Bering Strait Coast; Southern Seward Peninsula Coast; Interior Seward Peninsula; Eastern Norton Sound and Nulato Hills: Blizzard Warning from 4 AM Wednesday to 10 PM AKDT Thursday.

Lower Kobuk Valley; Baldwin Peninsula; Northern Seward Peninsula: Blizzard Warning from 10 AM Wednesday to 10 PM AKDT Thursday.

St. Lawrence Island: Blizzard Warning from 4 AM Wednesday to 4 AM AKDT Friday.

## ADVISORIES:

Kuskokwim Valley West; Kuskokwim Valley East; Lime Village: Winter Weather Advisory until 10 AM AKDT this morning.

Kuskokwim Delta Coast and Nunivak Island; Interior Kuskokwim Delta: Winter Weather Advisory until 10 AM AKDT this morning.

Eastern Alaska Range North of Trims Camp: Wind Advisory from 10 PM Wednesday to 4 PM AKDT Friday.

## STATEMENTS:

Upper Kobuk Valleys; Lower Koyukuk Valley; Middle Yukon Valley; Lower Yukon and Innoko Valleys; North Slopes of the Western Alaska Range; Upper Kuskokwim Valley: Another round of snow and rain Wednesday into Thursday.

Yukon Flats; White Mountains and High Terrain South of the Yukon River; Fortymile Country; Upper Tanana Valley; Delta Junction; Upper Chena River Valley; Tanana Flats; Eielson AFB and Salcha; Goldstream Valley and Nenana Hills; Chatanika River Valley; Two Rivers; Fairbanks Metro Area; Nenana; Northern Denali Borough; Eastern Alaska Range North of Trims Camp: Temperatures plummet tonight with ice concerns.

For more information, go to <https://www.weather.gov/arh/>

## Avalanche Conditions:



**Hatcher Pass** – Considerable above 3500, Moderate 2500' and under.

**Chugach State Park** – Considerable at all levels.

**Turnagain Pass and Girdwood** – Considerable at all levels.

**Summit Lake** – Considerable at all elevations.

**Seward and Lost Lake** – Considerable at all elevations.

**Valdez: Maritime, Intermountain, Continental** – High above 3000' Considerable 3000' and below.

**Douglas Island** – Moderate at Upper Elevations. Low at middle and lower elevations.

For more information and the most current avalanche conditions, go to <https://alaskasnow.org>

**The Next Situation Report** will be on **April 24, 2026**. A significant change in situation or threat level will prompt an interim report. This report is posted on the internet at <https://ready.alaska.gov/sitrep>.

To register for email distribution, go to: <http://list.state.ak.us/mailman/listinfo/dhsem.situation.report>. Direct questions regarding this report to the SEOC at 907-428-7100 or [seoc@alaska.gov](mailto:seoc@alaska.gov)