



ALASKA DIVISION OF HOMELAND SECURITY & EMERGENCY MANAGEMENT



Daily Situation Report 26-016 • January 16, 2026

Toll-Free 1.800.478.2337

Anchorage Area 907.428.7000

SEOC 907.428.7100

<u>SEOC Preparedness Level</u> Level 2-Heightened Awareness	http://ready.alaska.gov	<u>Alaska Military Installation Force Protection Level:</u> FPCON Bravo
<u>NTAS Bulletin</u> There are no current advisories https://www.dhs.gov/national- terrorism-advisory-system	<u>Maritime Security (MARSEC)</u> Level:1 Minimum Appropriate Security Measures	

(Significant changes from previous situation reports are red.)

Significant Issues:

St. Michael Frozen Lines

SEOC has been notified of a frozen sewer system and water lines in the community. Assistance is being provided by Norton Sound Health Corporation, Alaska Rural Utility Collaborative, Kawerak, and DEC. SEOC will continue to monitor the event and provide support when needed.

2025 October West Coast Storm Disaster:

- 68 households/199 individuals transitioned from non-congregate shelters (hotels) to longer-term housing (apartments)
- In Non-Congregate Shelter (hotels) 477

Division of Homeland Security and Emergency Management Public Information:

For current press releases, see: <https://ready.alaska.gov/PublicInformation/PressReleases>

Department of Health (DOH):

For current information, see: <https://health.alaska.gov/en/>

Travel Alerts and Conditions:

Richardson Highway from Fort Greely mile marker 261 to Paxson mile marker 185 is closed in both directions due to high winds, blowing snow, and reduced visibility. All lanes are closed.

Richardson Highway from mile marker 12 to mile marker 65 will remain closed due to weather and avalanche mitigation.

For current driving conditions, dial 511 or visit: <https://511.alaska.gov/>

Barry Arm Landslide / Tsunami Risk:

For the latest information on the Barry Arm Landslide and Tsunami risk, click here:

<https://dggs.alaska.gov/hazards/barry-arm-landslide.html>

Earthquakes:

United States Geological Service (USGS) Earthquake Information:

<https://www.usgs.gov/programs/earthquake-hazards>

National Tsunami Warning Center: <https://tsunami.gov/>

Alaska Volcanoes:

Great Sitkin Alert Level: **Watch** and Aviation Color Code: **Orange**

Shishaldin Alert Level: **Advisory** and Aviation Color Code: **Yellow**

Pavlov Alert Level: **Advisory** and Aviation Color Code: **Yellow**

For Alaska Volcano updates, go to: <https://www.avo.alaska.edu/>

Air Quality Index (AQI) Advisories:

For the most up-to-date Air Quality Index Advisories:

<https://dec.alaska.gov/Applications/Air/airtoolsweb/Advisories>

Spills of Oil and Hazardous Substances:

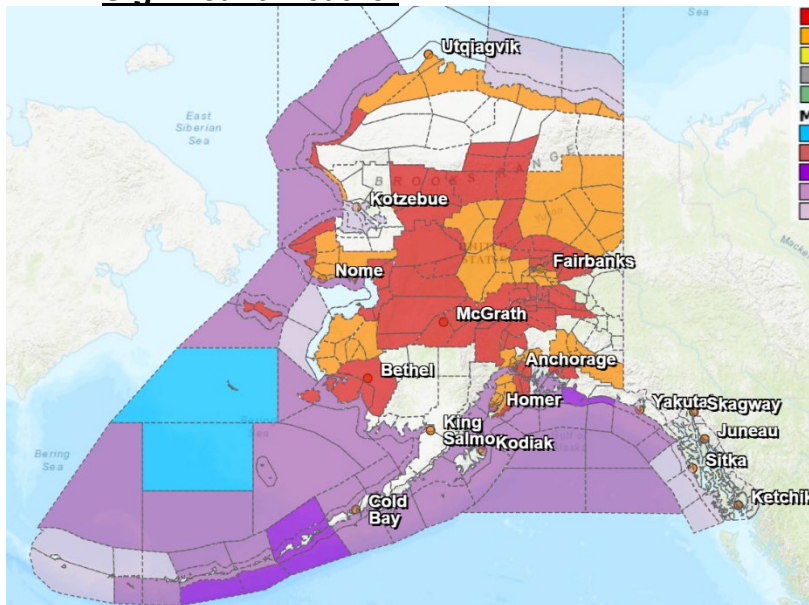
The Alaska Division of Environmental Conservation (ADEC) Spill Prevention and Response page is located at: <https://dec.alaska.gov/spar/ppr/spill-information/response/>

Alaska Cyber Security Information:

State Employees may sign up for cybersecurity notifications and alerts at:

<https://oit-int.alaska.gov/security/>

Significant Weather



Avalanche Warning:

- Through Saturday morning at 7am - Valdez and Thompson Pass
- Through Saturday morning at 6am – Western Chugach and Kenai Mountains, Girdwood, Portage, Turnagain Pass, Summit Lake, Lost Lake, and Seward

Winter Weather Advisory:

- Until 9pm this evening – Central Copper Valley, McCarthy, Southern Copper Valley, Western Copper Valley, Anchorage, Eagle River (all elevations), Matanuska Valley, Southern Susitna Valley, Central Interior, South Slopes of the Eastern Brooks Range, Upper Koyukuk Valley, Yukon Flats, Eielson AFB and Salcha, Fairbanks Metro Area, Nenana and Tanana Flats, Lower Yukon River and Yukon Delta Coast,
- Until 3pm this afternoon – NW Kenai Peninsula, SW Kenai Peninsula and Skilak Lake
- Until 3pm Saturday – Kivalina and Red Dog Dock, Central Beaufort Sea Coast, Eastern Beaufort Sea Coast, Northern Arctic Coast and Northwest Arctic Coast
- Until 4pm today – Eastern Norton Sound and Nulato Hills, Interior Seward Peninsula and Southern Seward Peninsula Coast

High Wind Warnings:

- Until 10pm tonight – Delta Junction

Winter Storm Warning:

- Until 9pm this evening – Ernestine, Thompson Pass, Central Susitna Valley, Northern Susitna Valley and Western Susitna Valley, Lower Koyukuk Valley, South Slopes of the Western Brooks Range, and Upper Kobuk Valleys
- Until 3pm Saturday – Eastern Alaska Range South of Trims Camp, and Southern Denali Borough

Winter Storm Warning:

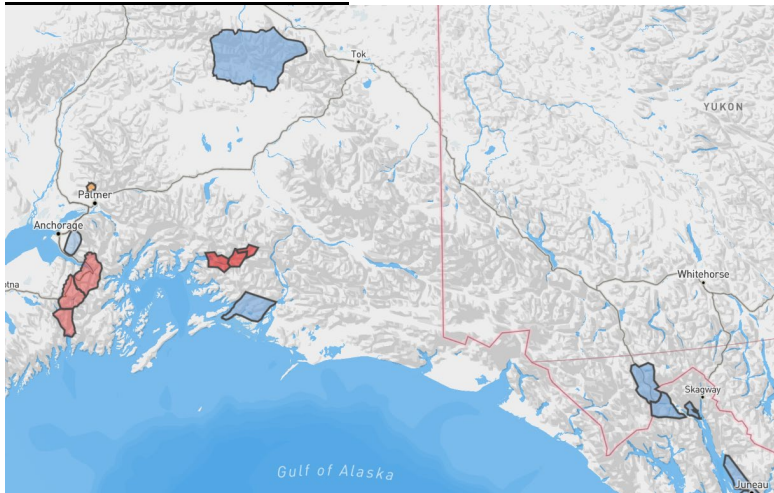
- Until 6pm tonight – Lower Yukon and Innoko Valleys, Middle Yukon Valley, North Slopes of the Western Alaska Range, and Upper Kuskokwim Valley

Blizzard Warning:

- Until 1pm this afternoon – Kuskokwim Delta
- Until 9pm Saturday – Dalton Highway Summit and South Slopes of the Central Brooks Range, Steese and Elliott Highways,
- Until 3pm Saturday – Bering Strait Coast, Diomede, St. Lawrence Island, and Central Brooks Range
- Until 3am Saturday – Eastern Alaska Range North of Trims Camp and Northern Denali Borough
- Until midnight tonight – Point Hope and Point Lay
- Until 9pm tonight – Chatanika River Valley, Goldstream Valley and Nenana Hills, Two Rivers, and Upper Chena River Valley
- Until 6pm tonight – Eastern Norton Sound and Nulato Hills

For more information, go to <https://www.weather.gov/arh>

Avalanche Conditions:



Hatcher Pass – Considerable above 2,500'; Moderate below 2,500'
Chugach State Park – Special Avalanche Bulletin available

Turnagain Pass and Girdwood – High at all elevations

Summit Lake - High at all elevations

Seward and Lost Lake- High at all elevations

Maritime – High at all elevations

Intermountain – High at all elevations

Continental – High at all elevations

For more information and the most current avalanche conditions, go to <https://alaskasnow.org>

The Next Situation Report will be on **January 20, 2026**. A significant change in situation or threat level will prompt an interim report. This report is posted on the internet at <https://ready.alaska.gov/sitrep>.

To register for email distribution, go to: <http://list.state.ak.us/mailman/listinfo/dhsem.situation.report>.
Direct questions regarding this report to the SEOC at 907-428-7100 or seoc@alaska.gov.