



**ALASKA DIVISION OF HOMELAND  
SECURITY & EMERGENCY MANAGEMENT**

**Daily Situation Report**  
**25-280 October 7, 2025**



Toll-Free 1.800.478.2337

Anchorage Area 907.428.7000

SEOC 907.428.7100

<b><u>SEOC Preparedness Level</u></b>  Level 2 – Heightened Awareness	<a href="http://ready.alaska.gov">http://ready.alaska.gov</a>	<b><u>Alaska Military Installation Force Protection Level:</u></b> FPCON Bravo
<b><u>NTAS Bulletin</u></b> The U.S. Department of Homeland Security issued updated National Terrorism Advisory Bulletin on June 22, 2025. <a href="https://www.dhs.gov/national-terrorism-advisory-system">https://www.dhs.gov/national-terrorism-advisory-system</a>	<b><u>Maritime Security (MARSEC)</u></b>  Level - 1 Minimum Appropriate Security Measures	

(Significant changes from previous situation reports are red.)

**Significant Issues:**

**Elfin Cove:**

Over the weekend, the Forestry crew continued debris removal operations, clearing access routes and exposing damaged water and electrical lines in preparation for repair. Half of the 21-person crew was demobilized, while the remaining members are expected to complete work by the end of the week, with power restoration remaining on schedule. The SEOC Division Supervisor has been meeting nightly with community members to coordinate priorities and oversee ongoing response and recovery efforts.

**West Coast Storm:**

A strong storm is forecast to begin impacting Alaska's West Coast, with the most significant effects expected to develop on Wednesday. The SEOC has received multiple briefings on the system—on Friday, over the weekend, and again this morning. While this event is not anticipated to reach the severity of the 2022 Merbok storm, some areas could experience tides 4 to 9 feet above normal, accompanied by strong winds. SEOC conducted check-ins with communities identified as highest risk and will supplement overnight and standby staffing as needed.

**Department of Health (DOH):**

For resources and current information, see: <https://health.alaska.gov/en/>

**Travel Alerts and Conditions:**

For current driving conditions, dial 511 or visit: <https://511.alaska.gov/>

**Barry Arm Landslide / Tsunami Risk:**

For the latest information on the Barry Arm Landslide and Tsunami risk, click here:  
<https://dggs.alaska.gov/hazards/barry-arm-landslide.html>

### **Earthquakes:**

United States Geological Service (USGS) Earthquake Information:

<https://www.usgs.gov/programs/earthquake-hazards>

National Tsunami Warning Center: <https://tsunami.gov/>

### **Alaska Volcanoes:**

**Great Sitkin** Alert Level: **Watch** and Aviation Color Code: **Orange**

**Shishaldin** Alert Level: **Advisory** and Aviation Color Code: **Yellow**

For Alaska Volcano updates, go to: <https://www.avo.alaska.edu/>

### **Air Quality Index (AQI) Advisories: No active advisory/episodes**

For the most up-to-date Air Quality Index Advisories:

<https://dec.alaska.gov/Applications/Air/airtoolsweb/Advisories>

### **Spills of Oil and Hazardous Substances:**

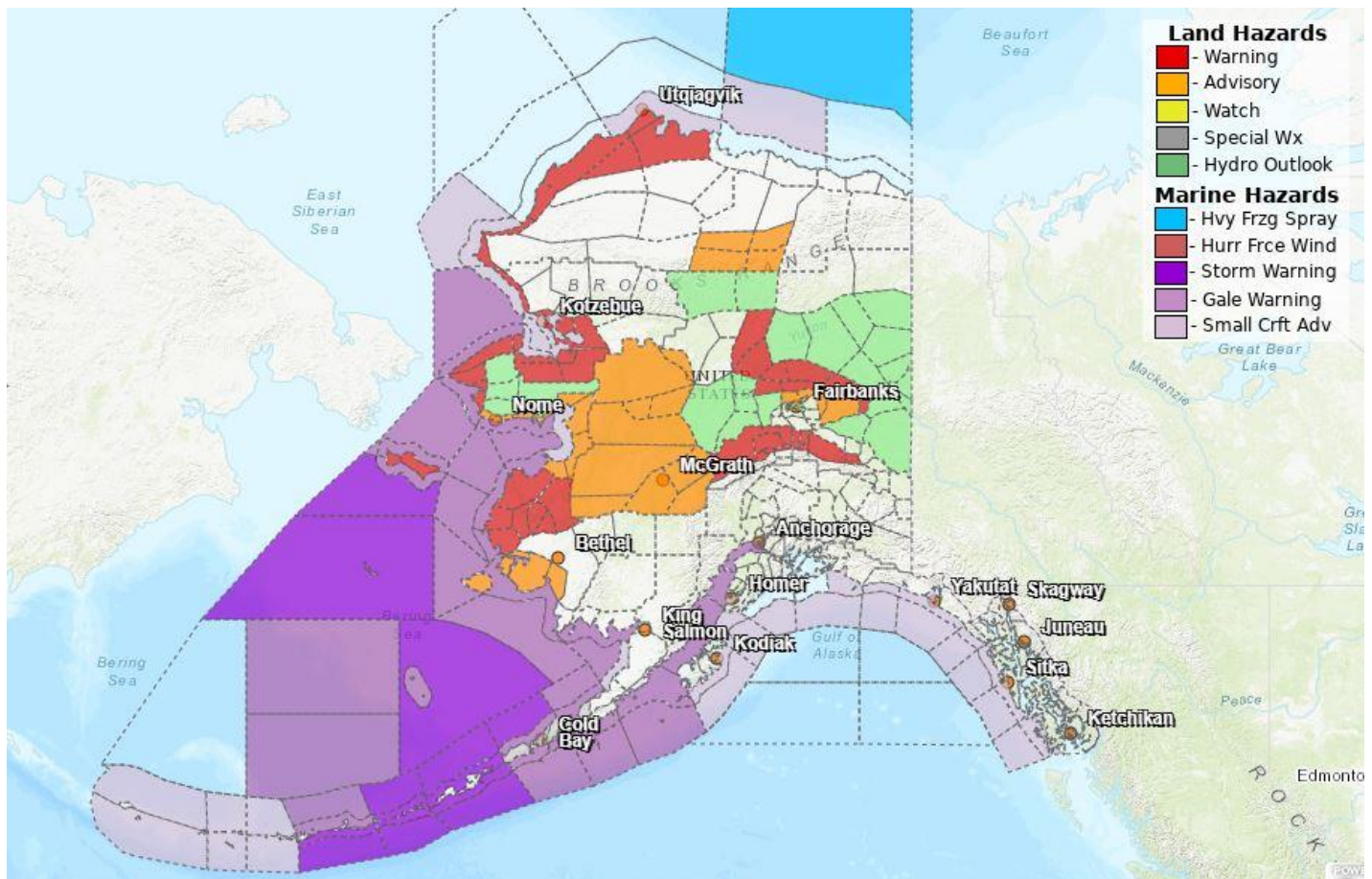
The Alaska Division of Environmental Conservation (ADEC) Spill Prevention and Response page is located at: <https://dec.alaska.gov/spar/ppr/spill-information/response/>

### **Alaska Cyber Security Information: No current published alerts notices**

State Employees may sign up for cybersecurity notifications and alerts at:

<https://oit.alaska.gov/security>

### **Significant Weather:**



### **Coastal Flood Warning:**

- **St. Lawrence Island:** 4 PM Tuesday to 10 AM AKDT Thursday.

- **Shishmaref:** 4 PM Tuesday to 4 PM AKDT Thursday.
- **Yukon Delta Coast:** 7 AM Tuesday to 10 PM AKDT Wednesday.
- **Northwest Arctic Coast:** 7 AM Wednesday to 4 AM AKDT Friday.
- **Kivalina and Red Dog Dock:** 10 PM Tuesday to 4 AM AKDT Friday.
- **Western Arctic Coast:** 4 AM Wednesday to 4 AM AKDT Friday.
- **Lower Kobuk Valley:** 4 AM Wednesday to 4 AM AKDT Friday.
- **Northern Arctic Coast:** 7 AM Wednesday to 4 AM AKDT Friday.
- **Baldwin Peninsula:** 4 AM Wednesday to 4 AM AKDT Friday.
- **Northern Seward Peninsula:** 4 AM Wednesday to 4 AM AKDT Friday.

#### **Coastal Flood Advisory:**

- **Kuskokwim Delta Coast and Nunivak Island:** 7 AM Tuesday to 4 AM AKDT Wednesday.
- **Southern Seward Peninsula Coast:** 8 AM Tuesday to 7 AM AKDT Thursday.
- **Eastern Norton Sound and Nulato Hills:** 4 PM Tuesday to 7 AM AKDT Thursday.
- **Bering Strait Coast:** 8 AM Tuesday to 4 PM AKDT Thursday.

#### **High Wind Warning:**

- **St. Lawrence Island:** 4 AM to 7 PM AKDT Tuesday.
- **Yukon Delta Coast and Lower Yukon River:** 10 AM Tuesday to 1 AM AKDT Wednesday.
- **Shishmaref and Bering Strait Coast:** 4 AM Tuesday to 1 AM AKDT Wednesday.
- **Dalton Highway Summits; White Mountains; High Terrain South of the Yukon River:** 10 PM Tuesday to 4 PM AKDT Thursday.
- **Northern Denali Borough and Eastern Alaska Range:** 4 PM Tuesday to 10 PM AKDT Wednesday.

#### **Wind Advisory:**

- **Upper Chena River Valley and Chatanika River Valley:** 10 PM Wednesday to 1 PM AKDT Thursday.
- **Lower Koyukuk Valley; Middle Yukon Valley; Lower Yukon and Innoko Valleys; North Slopes of the Western Alaska Range; Upper Kuskokwim Valley:** 10 AM Tuesday to 1 PM AKDT Wednesday.

**Special Weather Statement:** Southern Alaska Peninsula — strong gusty winds expected throughout tonight.

**Winter Weather Advisory:** Central Brooks Range — 7 PM Tuesday to 10 AM AKDT Thursday.

**Hydrologic Outlook:** South Slopes Of The Central Brooks Range; Dalton Highway Summits; Yukon Flats; White Mountains and High Terrain South of the Yukon River; Forty-mile Country; Upper Chena River Valley; Central Interior, and Fairbanks Metro Area – Moderate rain and melting snow for interior Alaska.

**Southern Seward Peninsula Coast: Interior Seward Peninsula** – Strong coastal storm will bring moderate to heavy rainfall to the southern Seward Peninsula.

**For more information,** go to <https://weather.gov/arh>

**The Next Situation Report** will be on **October 8, 2025**. A significant change in situation or threat level will prompt an interim report. This report is posted on the internet at <https://ready.alaska.gov/sitrep>.

To register for email distribution, go to: <http://list.state.ak.us/mailman/listinfo/dhsem.situation.report>. Direct questions regarding this report to the SEOC at 907-428-7100 or [seoc@alaska.gov](mailto:seoc@alaska.gov).