

**ALASKA DIVISION OF HOMELAND
SECURITY & EMERGENCY MANAGEMENT
SITUATION REPORT
25-105 April 15, 2025**



Toll-Free 1.800.478.2337

Anchorage Area 907.428.7000

SEOC 907.428.7100

<p align="center"><u>SEOC Preparedness Level</u></p> <p align="center">Level 1</p>	<p align="center">http://ready.alaska.gov</p>	<p align="center"><u>Alaska Military Installation Force Protection Level:</u></p> <p align="center">FPCON Bravo</p>
	<p align="center"><u>Maritime Security (MARSEC)</u></p> <p align="center">Level:1- Minimum Appropriate Security Measures</p>	

(Significant changes from previous situation reports are red.)

Significant Issues:

None

Department of Health (DOH):

For resources and current information, see: <https://health.alaska.gov/en/>

NTAS Bulletin:

The U.S. Department of Homeland Security issued an updated National Terrorism Advisory Bulletin on May 24, 2023. The current and expired bulletins can be viewed at the link below.

<https://www.dhs.gov/national-terrorism-advisory-system>

Travel Alerts and Conditions:

For current driving conditions, dial 511 or visit: <https://511.alaska.gov/>

Barry Arm Landslide / Tsunami Risk:

For the latest information on the Barry Arm Landslide and Tsunami risk, click here:

<https://dggs.alaska.gov/hazards/barry-arm-landslide.html>

Earthquakes:

United States Geological Service (USGS) Earthquake Information:

<https://www.usgs.gov/programs/earthquake-hazards>

National Tsunami Warning Center: <https://tsunami.gov/>

Alaska Volcanoes:

Great Sitkin Alert Level: **Watch** and Aviation Color Code: **Orange**

Mt. Spurr Alert Level: **Advisory** and Aviation Color Code: **Yellow**

For Alaska Volcano updates, go to: <https://www.avo.alaska.edu/>

Air Quality Index (AQI) Advisories:

No active advisories/episodes are currently in effect.

For the most up-to-date Air Quality Index Advisories:

<https://dec.alaska.gov/Applications/Air/airtoolsweb/Advisories>

Spills of Oil and Hazardous Substances:

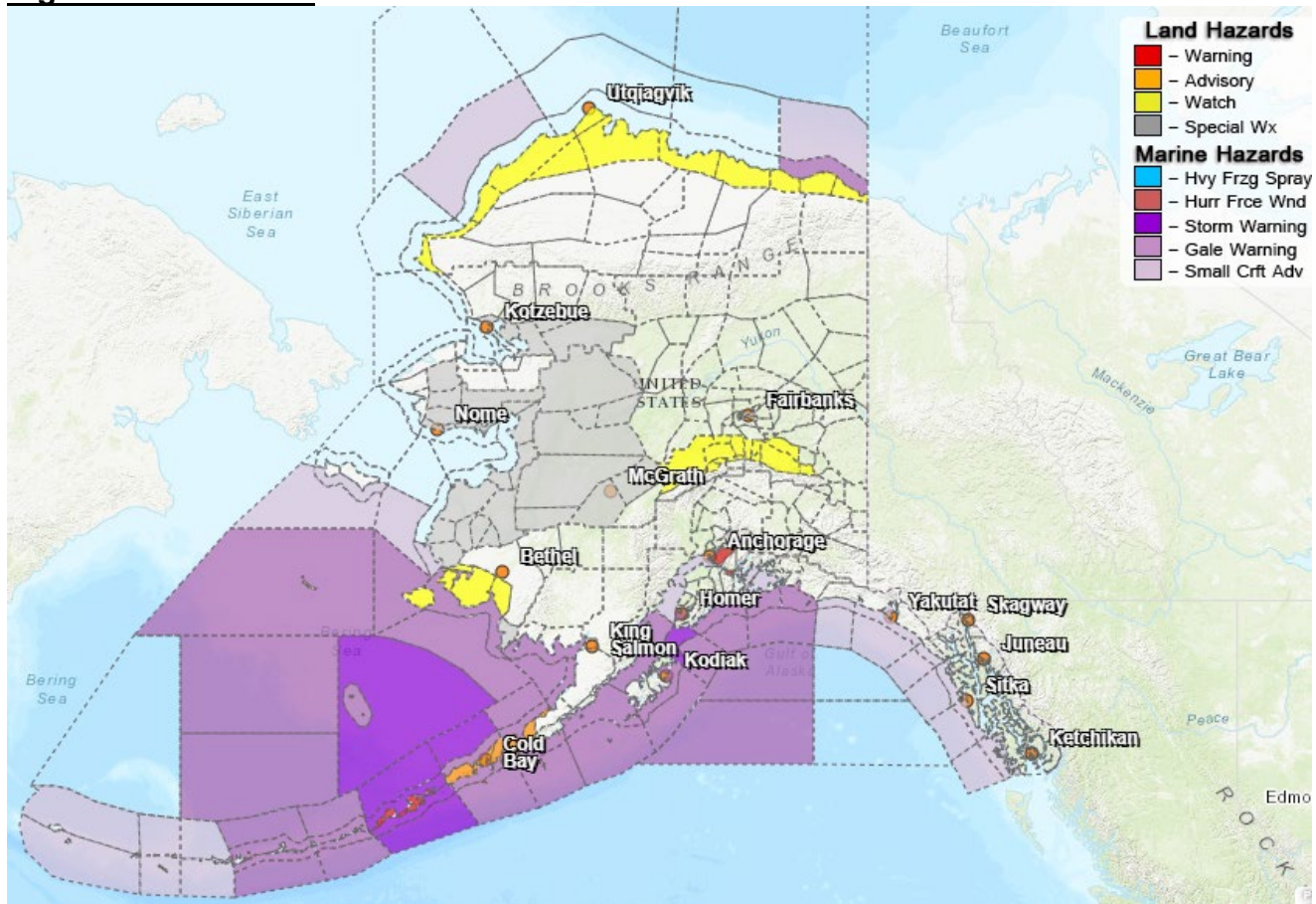
The Alaska Division of Environmental Conservation (ADEC) Spill Prevention and Response page is located at: <https://dec.alaska.gov/spar/>

Alaska Cyber Security Information:

State Employees may sign up for cybersecurity notifications and alerts at:

<https://oit.alaska.gov/security>

Significant Weather:



High Wind Warning: 40-60 mph with gust to 80mph until 10p Wednesday
Portage

High Wind Advisory: 40-60 mph with gusts to 85 mph Weds 4 am through 1am Thurs
Anchorage Hillside / Eagle River

Winter Weather Advisory: Remains in Effect until 11am this morning
Southern Alaska Peninsula

Winter Storm Watch: Remains in Effect from this evening through Wed evening
Kuskokwim Delta Coast and Nunivak Island

Winter Storm Warning: Remains in Effect until 1 am Thursday with northerly gusts up to 65 mph
Eastern Aleutians

Special Weather Statement: Snow, blowing snow, reduced visibility into this evening
Western Capes

Special Weather Statement: Patches of Ice in the early a.m Tuesday

Fairbanks Metro Area

Special Weather Statement: Wintery Mess for Western Alaska

Lower Kobuk Valley; Upper Kobuk Valleys; Southern Seward Peninsula Coast; Interior Seward Peninsula; Eastern Norton Sound and Nulato Hills; Yukon Delta Coast; Lower Yukon River; Lower Koyukuk Valley; Middle Yukon Valley; Lower Yukon and Innoko Valleys; Upper Kuskokwim Valley

High Wind Watch: Up to 50 mph through Thurs afternoon

Eastern Alaska Range North of Trims Camp; Delta Junction; Northern Denali Borough

Winter Storm Watch: Blizzard Conditions with strong winds

Northwest Arctic Coast; Northern Arctic Coast; Central Beaufort Sea Coast; Eastern Beaufort Sea Coast; Western Arctic Coast

For more weather updates and information, go to <https://weather.gov/arh/>

Alaska Wildland 2024 Fire Season:

The Alaska Interagency Coordination Center is at Preparedness Level: 1

Total Fires YTD: 20

Total Acres: 5

There are currently 3 active fire(s) with 1 new and 0 fires staffed.

For more information, go to <https://fire.ak.blm.gov/> or <https://akfireinfo.com/>

Avalanche Conditions:

Hatcher Pass – (from 4/13) Low at all levels

Chugach State Park – (from 4/11) Dangerous conditions are expected

Turnagain Pass – Considerable above 2,500' Moderate below 2,500'

Summit Lake – Moderate at all levels

Seward and Lost Lake – Considerable above 2,500' Moderate below 2,500'.

Continental, Intermountain, Maritime – Considerable at all elevations.

For more information and the most current avalanche conditions, go to: <https://alaskasnow.org/>

The Next Situation Report will be on **April 16, 2025**. A significant situation or threat level change will prompt an interim report. This report is posted on the internet at <https://ready.alaska.gov/sitrep>.

To register for email distribution, PLEASE go to:

<http://list.state.ak.us/mailman/listinfo/dhsem.situation.report>.

Direct questions regarding this report to the SEOC at 907-428-7100 or seoc@alaska.gov.