



**ALASKA DIVISION OF HOMELAND
SECURITY & EMERGENCY MANAGEMENT**
SITUATION REPORT
25-017• January 17, 2025



Toll-Free 1.800.478.2337

Anchorage Area 907.428.7000

SEOC 907.428.7100

<p><u>SEOC Preparedness Level</u> Level 1-Routine Operations</p>	<p>http://ready.alaska.gov</p>	<p><u>National Terrorism Advisory System:</u> Read the NTAS Bulletin here</p>
<p><u>Maritime Security (MARSEC)</u> Level:1- Minimum Appropriate Security Measures</p>	<p>WHO Novel Coronavirus Pandemic (COVID-19): 2019 Novel Coronavirus</p>	<p><u>Alaska Military Installation Force Protection</u> <u>Level:</u> FPCON Bravo</p>

(Significant changes from previous situation reports are red.)

Significant Issues:

West Coast Storm:

Yesterday, the SEOC was notified that President Biden issued a Federal Major Disaster Declaration for Public Assistance (PA) for the 2024 West Coast Storm that includes Kotzebue and the Northwest Arctic Borough.

Department of Health (DOH):

For current information, see: <https://health.alaska.gov/dph/Pages/default.aspx>
<https://health.alaska.gov/dph/Emergency/Pages/prepared/default.aspx>

NTAS Bulletin:

The U.S. Department of Homeland Security issued an updated National Terrorism Advisory Bulletin on May 24, 2023. The current and expired bulletins can be viewed at the below link.
<https://www.dhs.gov/national-terrorism-advisory-system>

Travel Alerts and Conditions:

Rabbit Creek Pedestrian Bridge over Seward Hwy and DeArmon Rd is CLOSED due to damage from high winds.

For current driving conditions, dial 511 or visit: <https://511.alaska.gov/>

Barry Arm Landslide / Tsunami Risk:

For the latest information on the Barry Arm Landslide and Tsunami risk, click here:
<https://dggs.alaska.gov/hazards/barry-arm-landslide.html>

Earthquakes:

United States Geological Service (USGS) Earthquake Information: <http://earthquake.usgs.gov/>
National Tsunami Warning Center: <http://tsunami.gov/>

Alaska Volcanoes:

Great Sitkin Alert Level: **Watch** and Aviation Color Code: **Orange**

Mt. Spurr Alert Level: **Advisory** and Aviation Color Code: **Yellow**

For Alaska Volcano updates, go to: <https://www.avo.alaska.edu/>

Air Quality Index (AQI) Advisories:

For the most up-to-date Air Quality Index Advisories:

<http://dec.alaska.gov/Applications/Air/airtoolsweb/Home/Index>

Spills of Oil and Hazardous Substances:

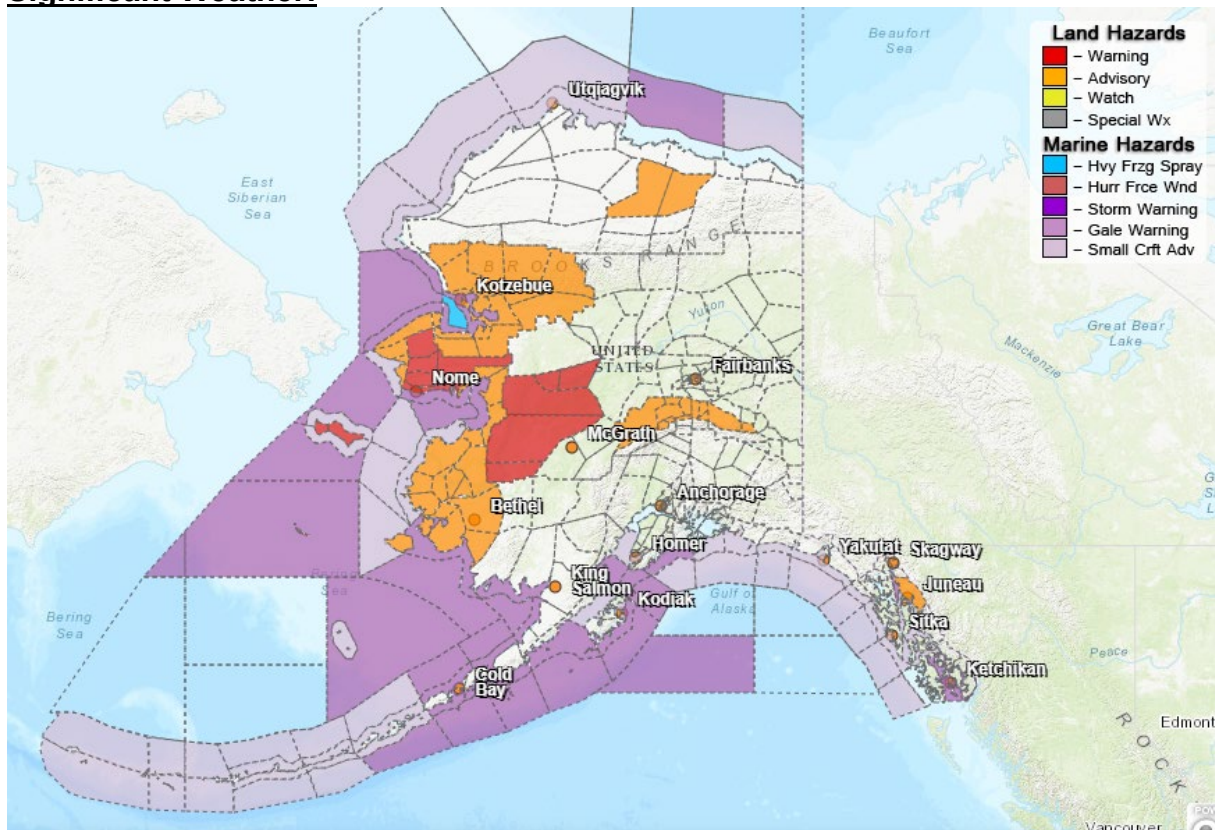
The Alaska Division of Environmental Conservation (ADEC) Spill Prevention and Response page is located at: <https://dec.alaska.gov/spar/>

Alaska Cyber Security Information:

State Employees may sign up for cybersecurity notifications and alerts at:

<https://oit.alaska.gov/security>

Significant Weather:



Winter Weather Advisory:

City and Borough of Juneau-in effect until 1pm this afternoon.

Central Arctic Plains-in effect until 9am Saturday.

Yukon Delta Coast, Lower Yukon River-in effect until 9am this morning.

South Slopes of the Western Brooks Range, Noatak Valley, Lower Kobuk Valley, Northern Seward Peninsula, Upper Kobuk Valleys-in effect from 9am this morning to noon Saturday.

Baldwin Peninsula, Shishmaref, Bering Strait Coast, Eastern Norton Sound and Nulato Hills - from 9am this morning until 3 pm Saturday.

Wind Advisory:

Kuskokwim Delta-in effect until 4pm Saturday.

Eastern Alaska Range North of Trims Camp-in effect until noon Saturday.

Blizzard Warning:

St Lawrence Island- in effect until 6pm this evening.

Winter Storm Warning:

Middle Yukon Valley, Lower Yukon and Innoko Valleys, Southern Seward Peninsula Coast and Interior Seward Peninsula-in effect until 3pm Saturday.

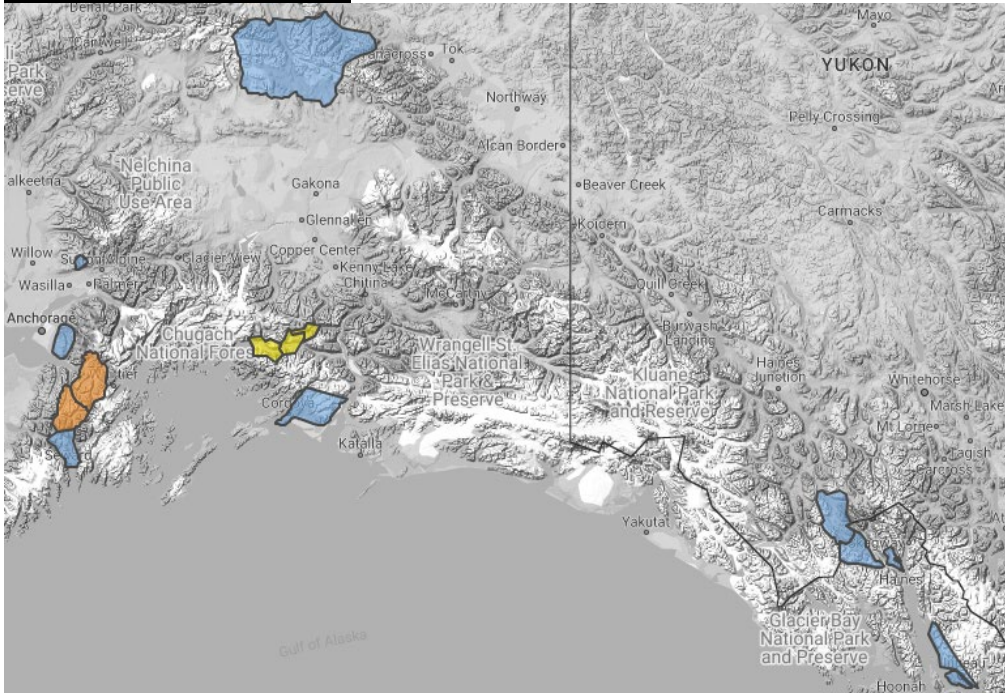
Coastal Flood Advisory:

Kuskokwim Delta- in effect until 4pm Saturday.

For more information and the most current Weather, Watches/Warning/Advisories go to:

<https://www.weather.gov/arh/>

Avalanche Conditions:



Summit Lake – Low below 1,000', Moderate between 1,000'-2,500', Considerable above 2,500'
Turnagain Pass – Low below 1,000', Moderate between 1,000'-2,500', Considerable above 2,500'
Hatcher's Pass –Low below 2,500', Moderate above 2,500'.
Valdez Maritime, Intermountain, and Continental – Low below 2,000', Moderate at 2,000' and above.

For more information and the most current avalanche conditions, go to: <https://alaskasnow.org/>

The Next Situation Report will be on **January 21, 2025**. An interim report will be prompted by a significant change in the situation or the threat level. This report is posted on the internet at <https://ready.alaska.gov/sitrep>.

To register for email distribution, PLEASE go to:

<http://list.state.ak.us/mailman/listinfo/dhsem.situation.report>.

Direct questions regarding this report to the SEOC at 907-428-7100 or seoc@alaska.gov.