



2020 COVID-19



Unified Command Operations Brief

11/09/2020 08:00



Ground Rules

- ✓ Telephone Mute
- ✗ Telephone Hold Function
- ✓ SEOC Desk Microphone



Incident Objectives



Objectives

Ensure the safety and security of responders as well as maximize the protection of public health and welfare.

Prevent the spread of COVID-19 in Alaska by implementing statewide containment and community mitigation strategies.

Support local emergency response operations through the coordination of information, situational reporting and resource requests.

Maintain statewide medical surge capacity to include Alternate Care Site facilities and staffing.

Execute State COVID-19 Vaccine Distribution and Management Plan.



Incident Objectives (cont.)

Objectives
Support communities in the execution of local COVID-19 distribution and management plans to include public information, local distribution resources, and ensuring vaccine access to all members of the community.
Maintain COVID-19 specimen collection centers and point of care testing sites statewide.
Implement the Governor's health mandates.
Keep the public, stakeholders and the media informed of operational activities and address rumors or incorrect information in a timely manner.
Continue supporting non-COVID-19 response operations, as necessary.



Opening IC Remarks





Situation Brief





Community Lifeline Status





Community Lifeline Status

	<h2>Safety and Security</h2>	
	 <p>Community Safety</p>	<p><u>5 Active Health Mandates</u></p> <ul style="list-style-type: none"> • HM 10: (Updated: 10/15/20) Interstate and International Travel • HM 14: (Updated: 4/23/20) Non-Congregate Sheltering Order • HM 15: (Updated: 6/17/20) Services by Health Care Providers • HM 17: (Updated: 5/27/20) Protective Measures for Independent Commercial Fishing Vessels • HM 18: (Updated: 6/5/20) Intrastate Travel <p>https://covid19.alaska.gov/health-mandates/</p>



Community Lifeline Status



Health and Medical



Public Health

Laboratory

Residency	Total Cases	New Cases	Hospitalized Cases	Deceased Cases	Recovered Cases	Active Cases	All Tests
Alaska	18,716	510	482	84	6,512	12,120	* 604,207
Non-Resident	1,110	2	9	0	649	461	



Significant Weather Impacts for Transportation

Anchorage & Mat-Su

- Slippery roads – melt/refreeze, but some areas won't melt until Wednesday

Gulf Coast Region

- Whiteout conditions at Thompson Pass Monday
- Avalanche concern on Richardson Highway from Valdez to Thompson Pass

Southwest

- Minor beach erosion and coastal flooding possible Tuesday
- IFR flight conditions Tues afternoon thru Wed
- Kuskokwim Delta & Bristol Bay - Possible strong winds along the coast Wed – gusts to 45 mph

Interior

- Eastern Interior & E Alaska Range – heavy snow with low visibility Monday
- Western Interior – snow & blowing snow Monday afternoon thru Tuesday morning

Northern

- Dalton Hwy – Down to 1 lane around Atigun Pass due to avalanches. Minimal additional snowfall.
- Minor beach erosion and coastal flooding possible Monday evening thru Tuesday
- Snow & blowing snow Mon afternoon thru Tues

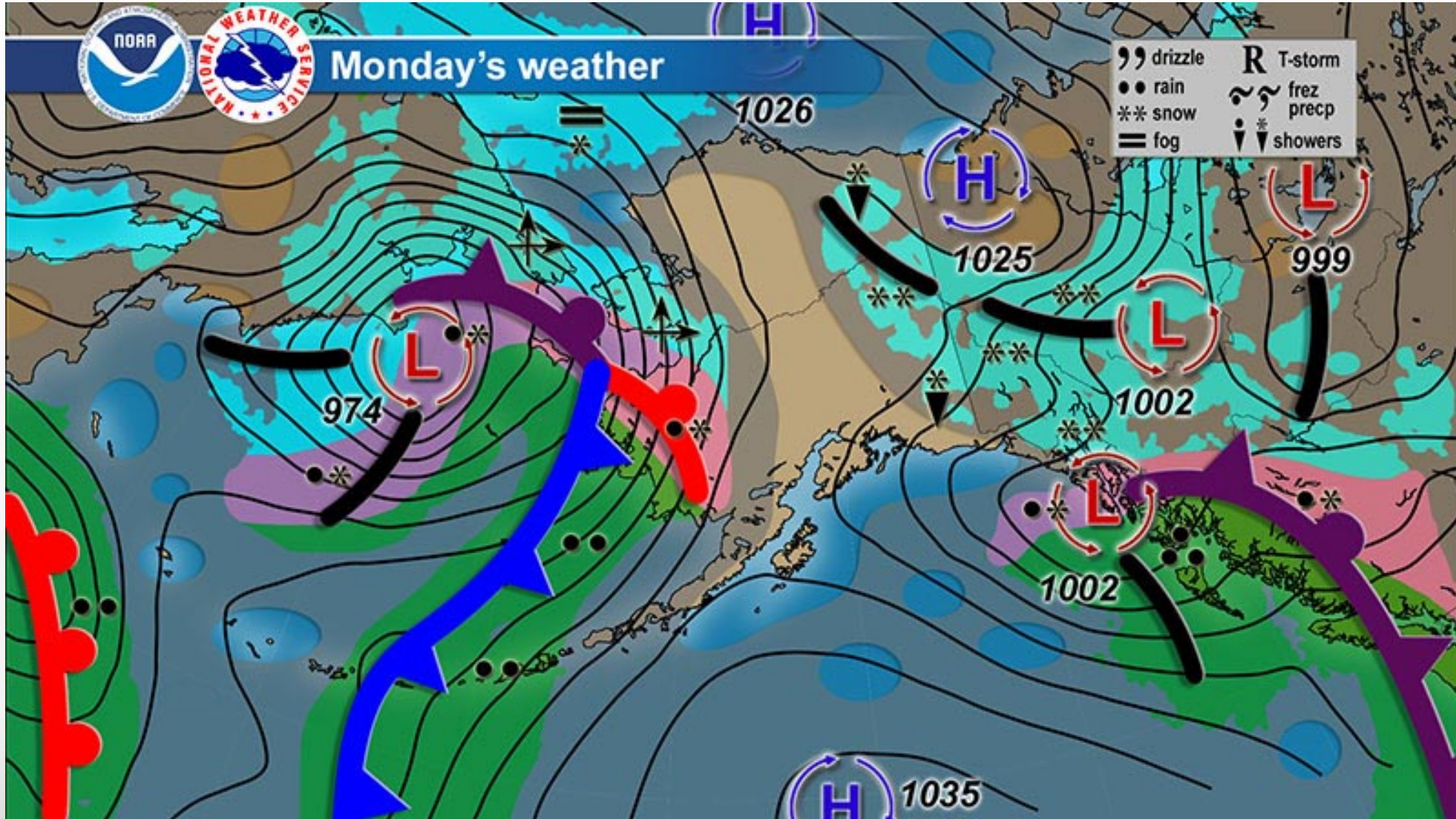
Southeast

- Rain on snow Monday – snow loading
- Snow returns Wednesday



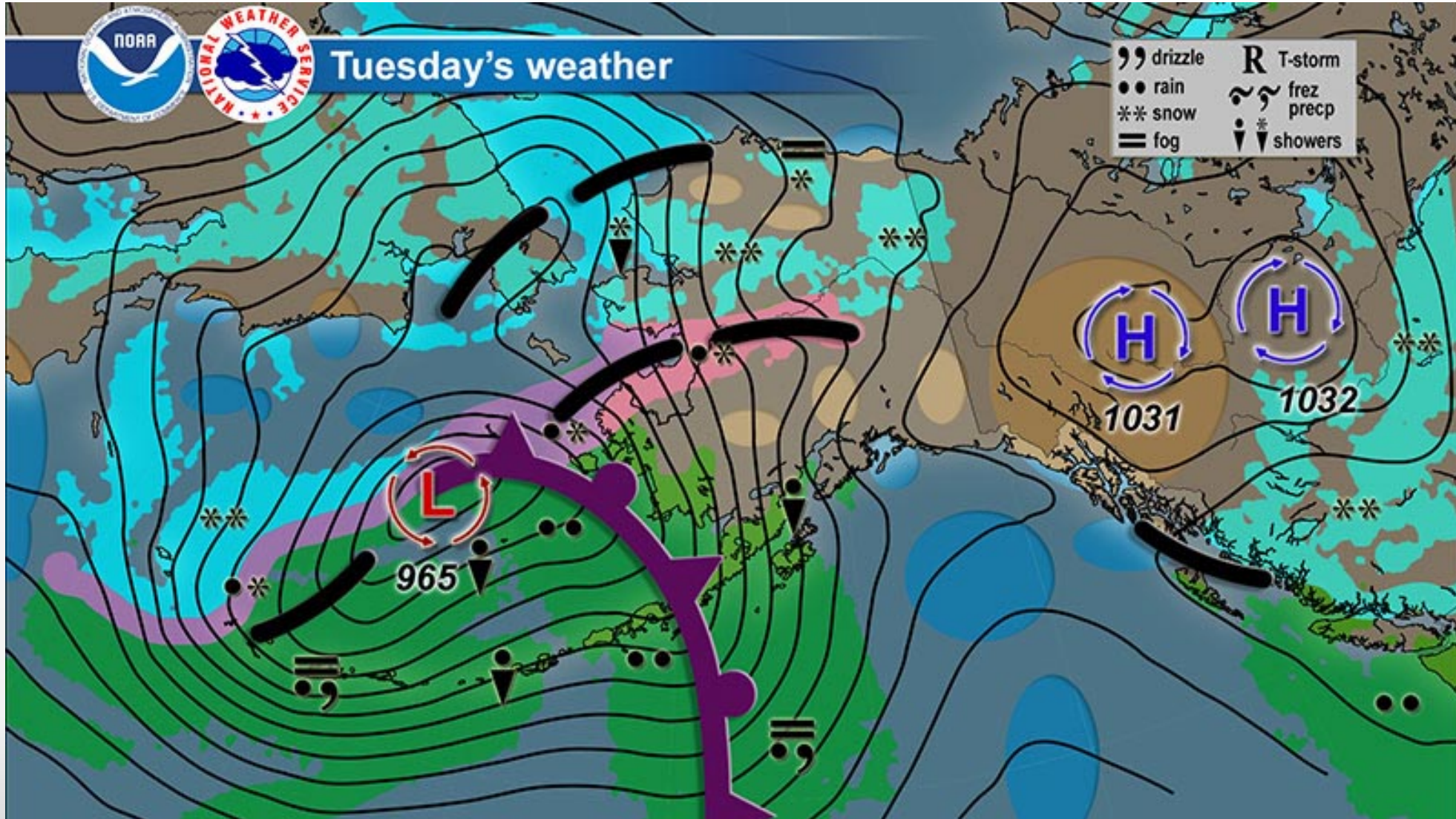


Today's Weather





Tomorrow's Weather

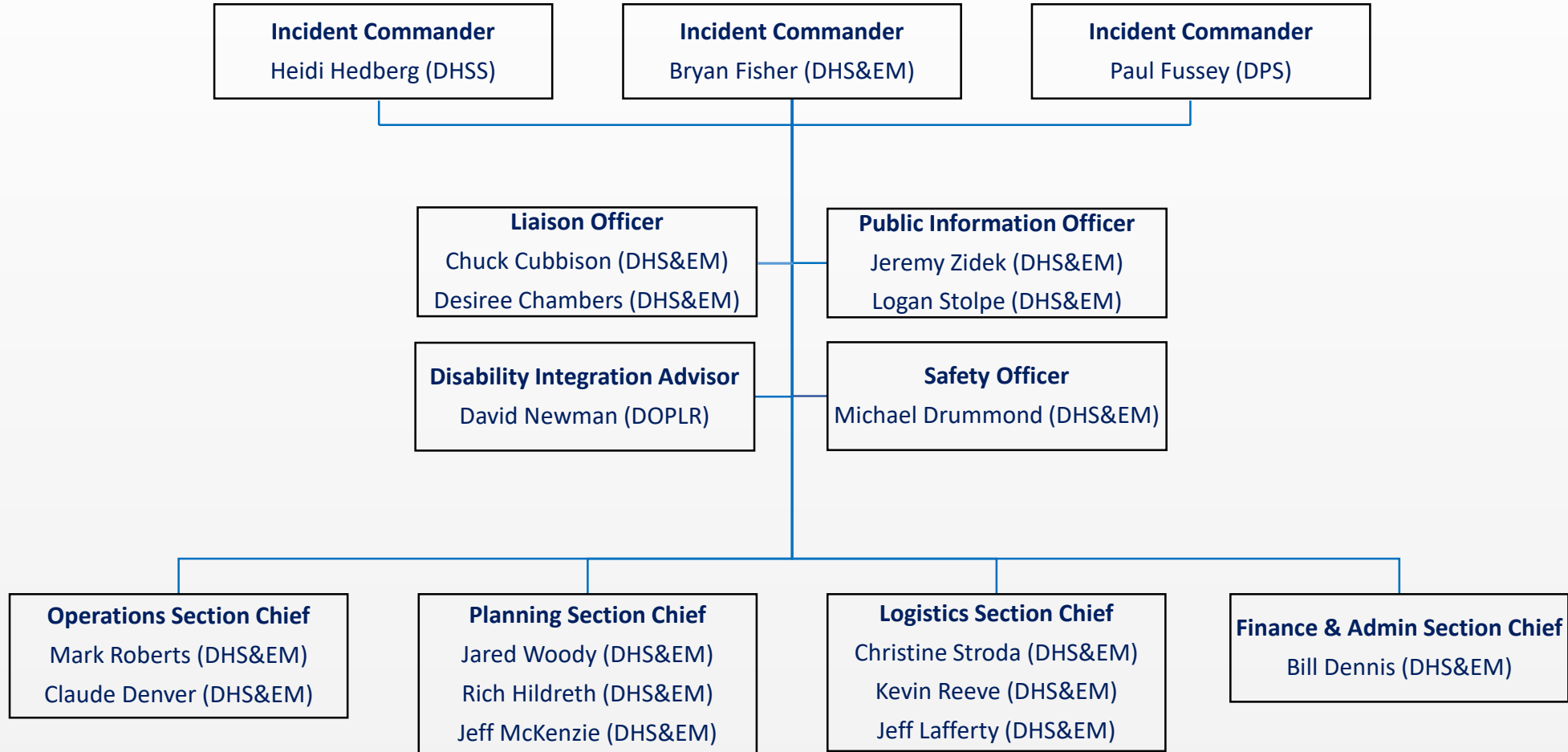




Operations

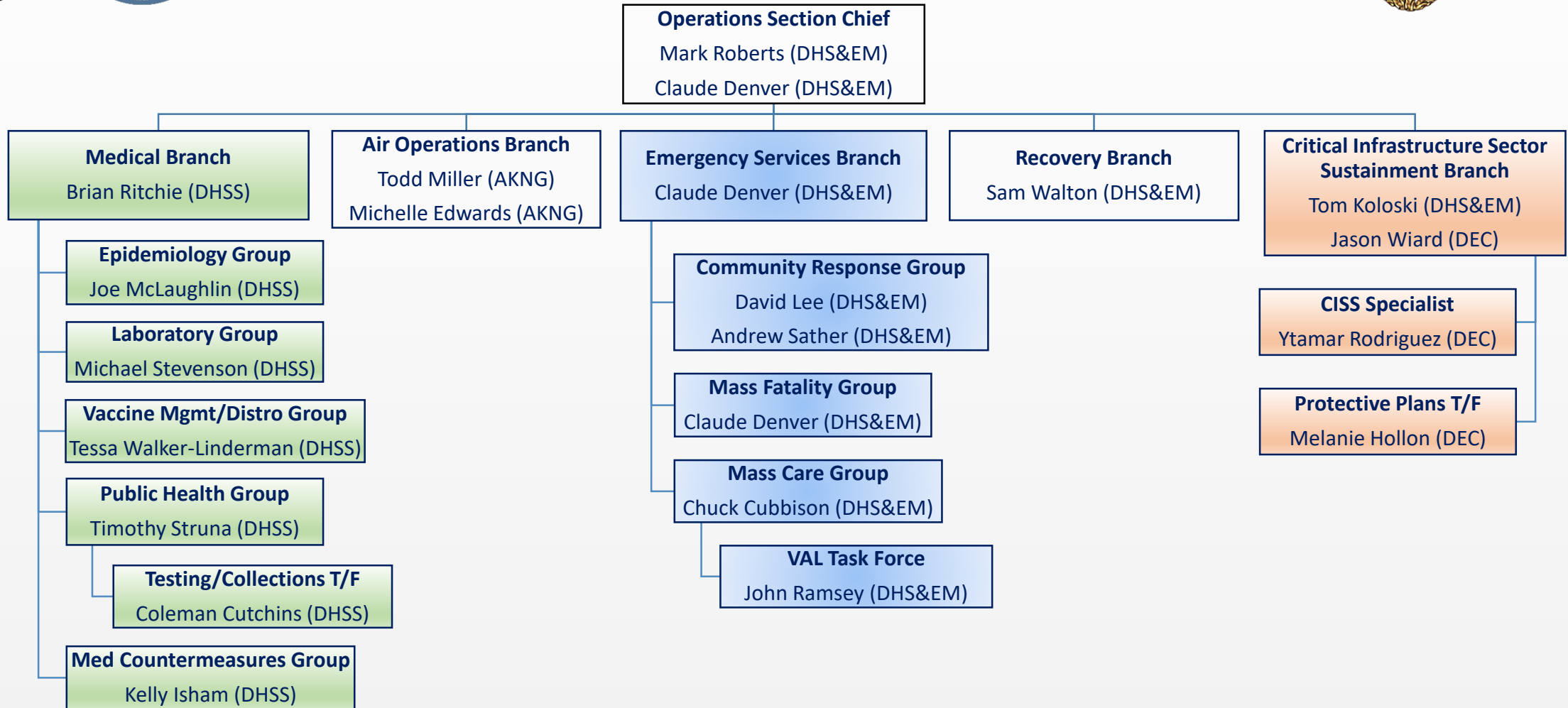


Unified Command Task Organization





Operations Task Organization





Liaison Officer

Inter-Agency Issues



Logistics



Finance



Safety Officer



Public Information Officer



Meeting Schedule

Monday, November 9, 2020

Operations Brief (OP22)	0800
SITREP	1500

Thursday, November 12, 2020

Operations Brief (OP22)	0800
SITREP	1500

Monday, November 16, 2020

Operations Brief (OP22)	0800
SITREP	1500



Closing IC Remarks

