



2020 COVID-19



Unified Command Operations Brief

11/2/2020 08:00



Ground Rules

-  Telephone Mute
-  Telephone Hold Function
-  SEOC Desk Microphone



Incident Objectives



Objectives

Ensure the safety and security of responders as well as maximize the protection of public health and welfare.

Prevent the spread of COVID-19 in Alaska by implementing statewide containment and community mitigation strategies.

Support local emergency response operations through the coordination of information, situational reporting and resource requests.

Maintain statewide medical surge capacity to include Alternate Care Site facilities and staffing.

Develop and submit draft State COVID-19 Vaccine Distribution and Management Plan by October 15, 2020.



Incident Objectives (cont.)



Objectives
Support communities in the development of local COVID-19 distribution and management plans to include public information, local distribution resources, and ensuring vaccine access to all members of the community.
Maintain COVID-19 specimen collection centers and point of care testing sites statewide.
Implement the Governor's health mandates.
Keep the public, stakeholders and the media informed of operational activities and address rumors or incorrect information in a timely manner.
Prepare to support non-COVID-19 response operations, as necessary.



Opening IC Remarks





Situation Brief





Community Lifeline Status





Community Lifeline Status

	<h2>Safety and Security</h2>	
	 <p>Community Safety</p>	<p><u>5 Active Health Mandates</u></p> <ul style="list-style-type: none"> • HM 10: (Updated: 10/15/20) Interstate and International Travel • HM 14: (Updated: 4/23/20) Non-Congregate Sheltering Order • HM 15: (Updated: 6/17/20) Services by Health Care Providers • HM 17: (Updated: 5/27/20) Protective Measures for Independent Commercial Fishing Vessels • HM 18: (Updated: 6/5/20) Intrastate Travel <p>https://covid19.alaska.gov/health-mandates/</p>



Community Lifeline Status



Health and Medical



Public Health

Laboratory

Residency	Total Cases	New Cases	Hospitalized Cases	Deceased Cases	Recovered Cases	Active Cases	All Tests (Cumulative)
Alaska	15,622	347	441	83	6,457	9,082	604,207
Non-Resident	1,083	2	7	0	647	436	



Significant Weather Impacts for Transportation

Anchorage & Mat-Su

- Strong winds peaking this morning, decreasing Monday afternoon
- Isolated severe turbulence Monday

Gulf Coast Region

- Kenai Peninsula – Isolated severe turbulence Monday

Southwest

- Significant beach erosion and minor coastal flooding Tuesday and Wednesday on NW-facing coastlines
- Heavy snow and blowing snow Tuesday morning through Wednesday morning

Interior

- Western Interior – Heavy snow and blowing snow starting Thursday

Northern

- Significant beach erosion and minor coastal flooding Tuesday and Wednesday on NW-facing coastlines
- Heavy snow and blowing snow Tuesday and Wednesday

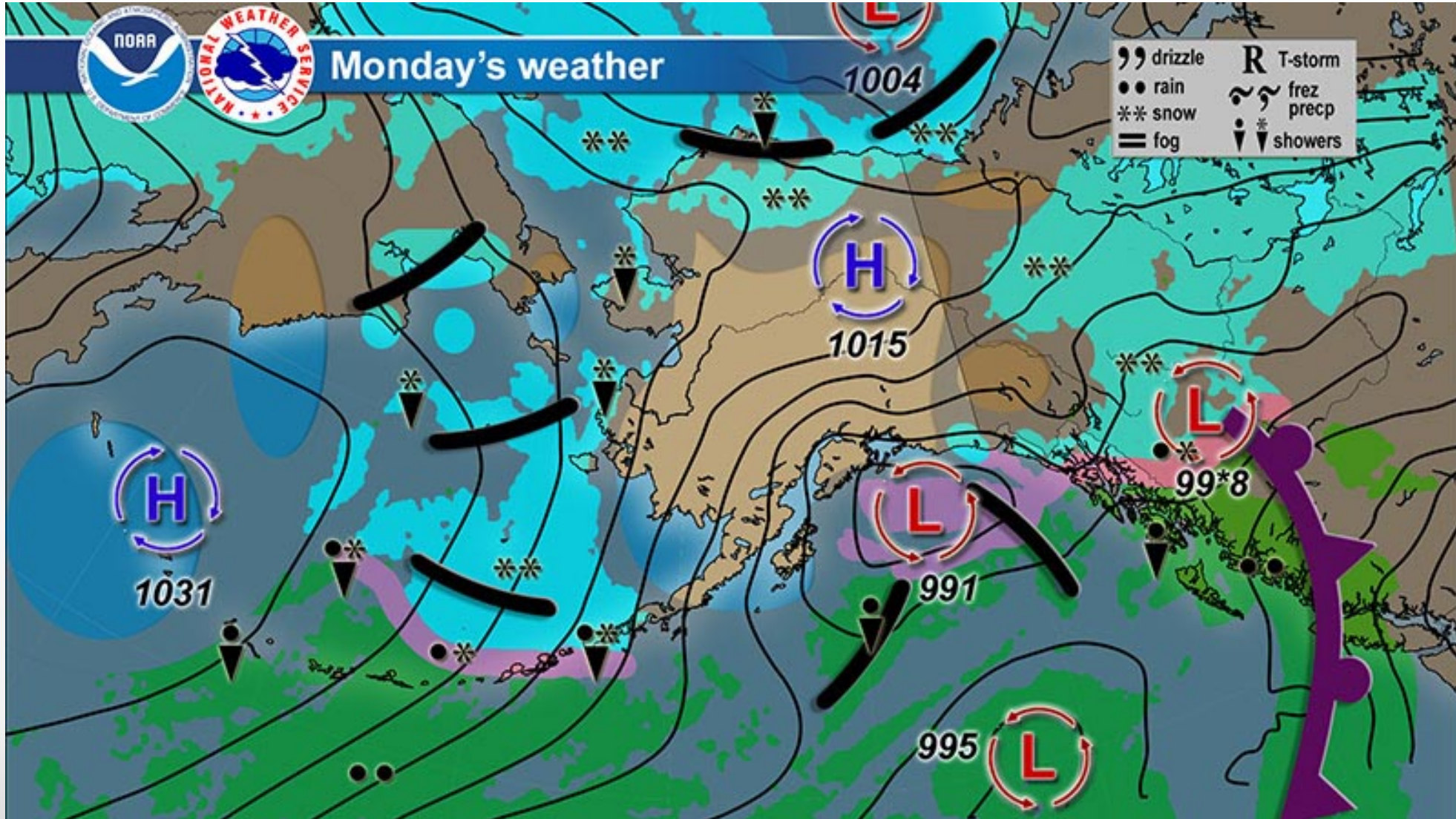
Southeast

- Heavy rain and snow tapering off Monday
- River levels peaking Monday



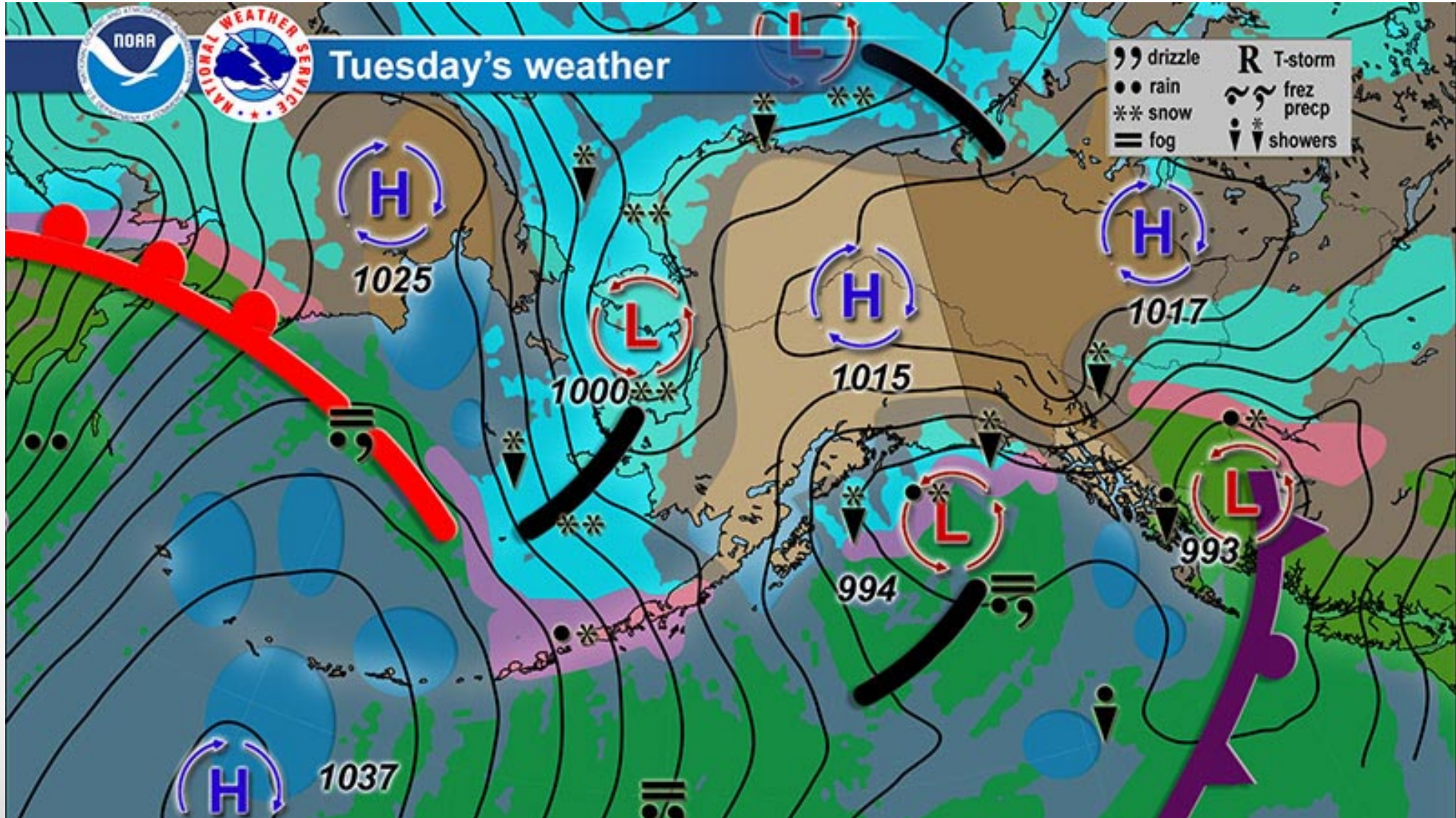


Today's Weather





Tomorrow's Weather

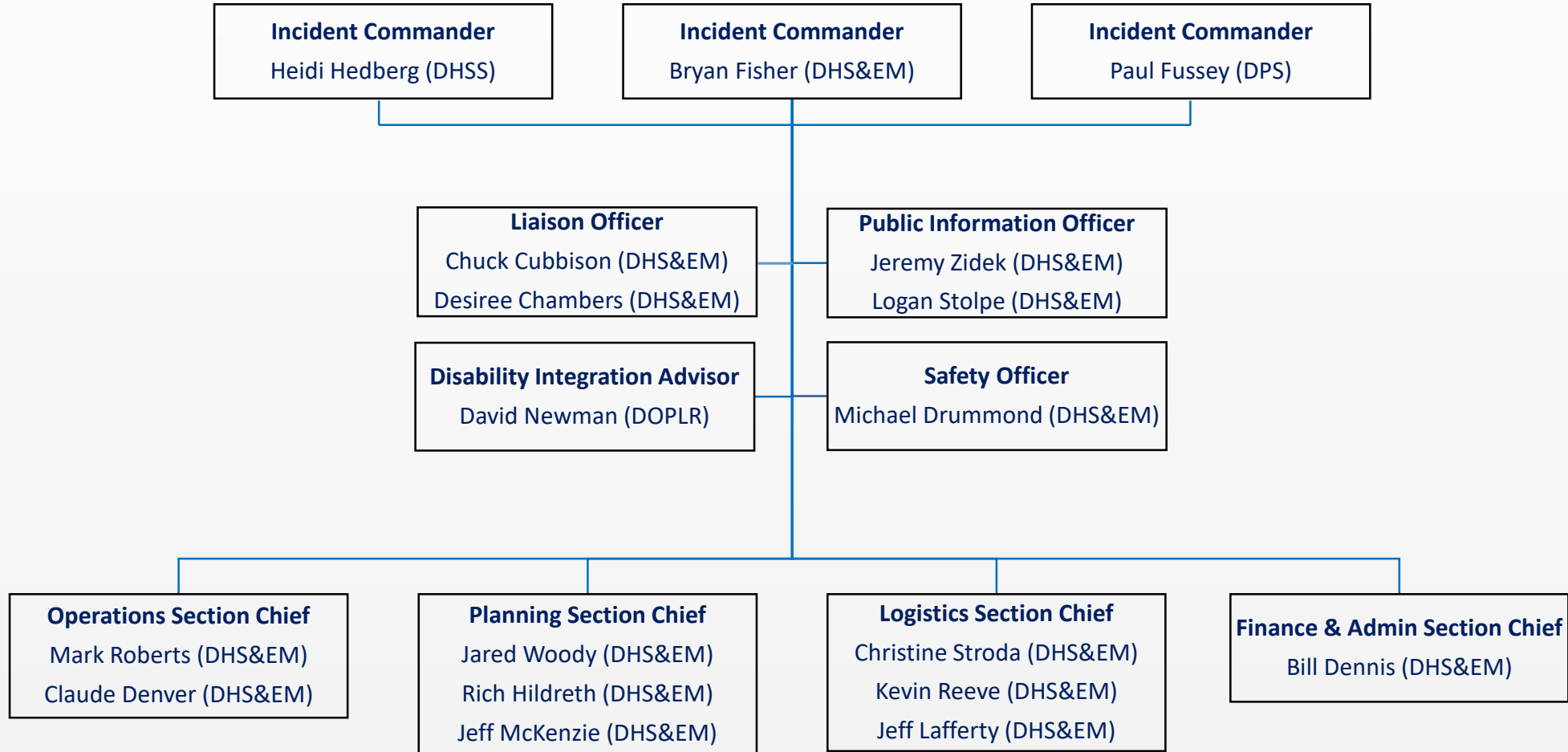




Operations

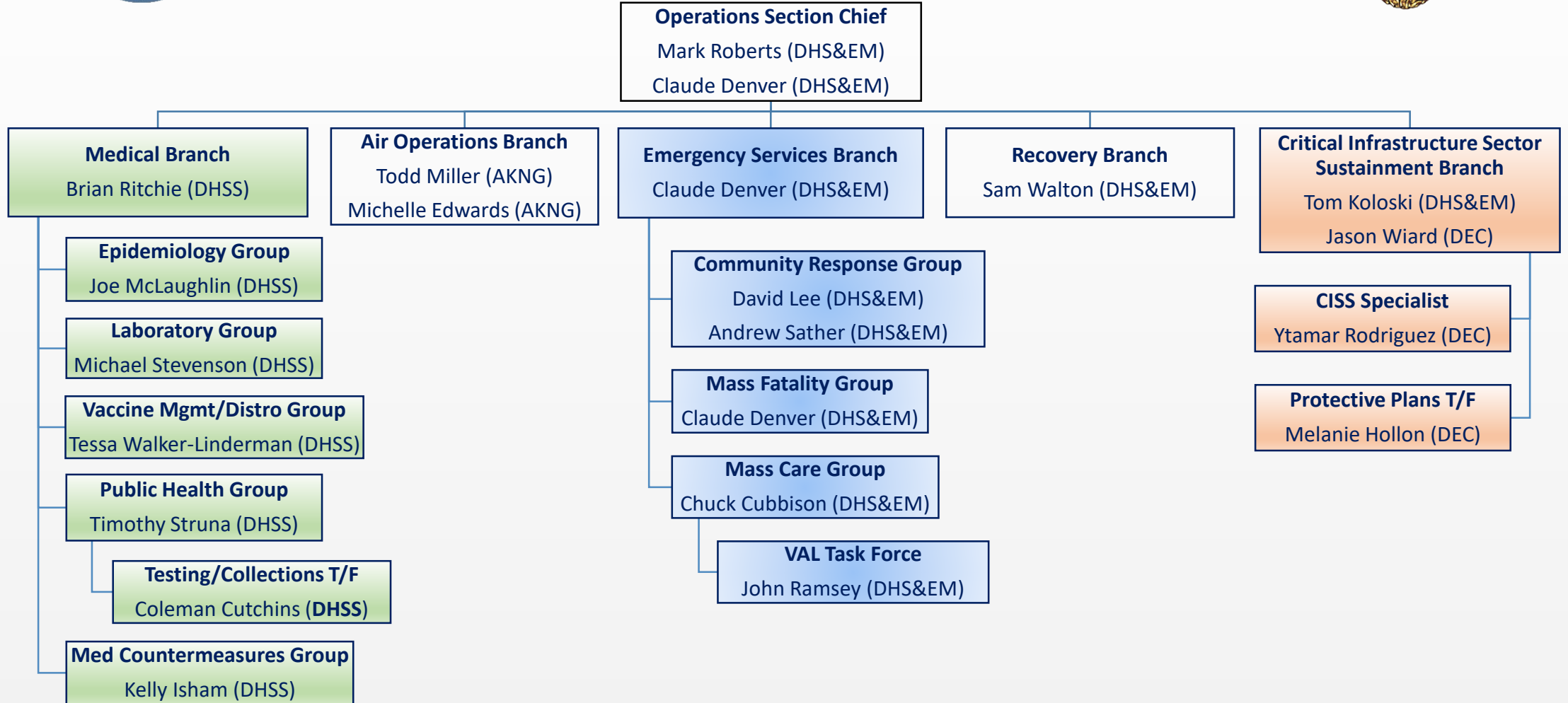


Unified Command Task Organization





Operations Task Organization





Liaison Officer

Inter-Agency Issues



Logistics



Finance



Safety Officer



Public Information Officer



Meeting Schedule

Monday, November 2, 2020

Operations Brief (OP21)	0800
SITREP	1500

Thursday, November 5, 2020

Operations Brief (OP22)	0800
Tactics Meeting	1100
Planning Meeting	1500
SITREP/IAP	1600

Monday, November 9, 2020

Operations Brief (OP22)	0800
SITREP	1500



Closing IC Remarks

